

Apple quest

MONSTERS



LET'S GO!

by @SplendidLand

INTRODUCTION

Welcome to Apple Quest Monsters, a collection of 50+ monsters from an RPG that doesn't exist.

I was inspired to make this from my childhood love of reading guides for games I never played.

I spent a lot of time and love on every monster, so I hope you enjoy reading them!

-splendidland

POMMELAND MAP



" GAMEPLAY "

Every monster has a Star Rating, you can put any monster on your team, including boss monsters, but their total stars mustn't exceed 9..



..But heck, this ain't a real Video Game, so just go hog wild and have fun.

Who will you put on your team?

Oh dear, these monsters
are having a fight.

That's scary, so let's
leave 'em to it and get
outta here.

Lv. 2

SLIME

HP 



Lv. 4

SKELETON

HP 



SKELETON USED BONE WALLOP



BESTIARY

NO: 01: APPLE WARRIOR



TYPE: NATURE

HABITAT: ???

ATTACK: APPLE BLADE



A PLUCKY KNIGHT WHO HAS ARRIVED TO HELP YOU ON YOUR ADVENTURE, HE'S NOT VERY STRONG, BUT HIS EAGERNESS FILLS YOU WITH CONFIDENCE.

HE WANTS TO ENTER THE HOLY ORCHARD TO BECOME MORE POWERFUL.

NO: 02: SLIME



TYPE: BEAST

HABITAT: GRASSLAND

ATTACK: TACKLE



THIS BEAST'S BODY
BECAME AMORPHOUS BECAUSE
IT HAS NO CLEAR GOALS
AND DOESN'T KNOW WHAT TO
DO WITH ITS LIFE.

IT'S THE WEAKEST OF ALL
MONSTERS BUT DON'T LET
THAT STOP YOU FROM
LOVING IT.

NO: 03: EARTHWORM



TYPE: NATURE

HABITAT: GRASSLAND

ATTACK: BURROW



DIGGING IS THE PASSION
OF THIS MONSTER, IT
TUNNELS THROUGH THE
EARTH AND EATS MUD.

IT ALWAYS MOVES FORWARD
BECAUSE ITS PAST IS FULL
OF SHAME AND REGRET.

NO: 04: BATTY



TYPE: BEAST
HABITAT: CAVE
ATTACK: SWOOP



FRAIL BEAST THAT GETS
PUSHED AROUND BY WIND,
IT WRAPS ITS LONG TAIL
AROUND ANYTHING IT CAN
FIND TO PREVENT IT FROM
BEING BLOWN AWAY.

IT MOVED TO THE CAVE TO
AVOID WIND, BUT IT'S
AFRAID OF THE DARK.

NO: 05: CARROT WARRIOR



TYPE: NATURE

HABITAT: ???

ATTACK: C-SPEAR



RIVAL TO APPLE WARRIOR,
HE TAKES HIS JOB VERY
SERIOUSLY AND MOST
PEOPLE CONSIDER HIM TO
BE A JERK.

HE BELIEVES THAT HE IS
THE STRONGEST WARRIOR,
BECAUSE OF THE VITAMINS
IN HIS BODY.

NO: 06: ZOMBIE



TYPE: UNDEAD

HABITAT: GRASSLAND

ATTACK: ROTTEN BITE



A KIND OF GHOST WHO HAS NEVER KNOWN A LIFE OUTSIDE OF THEIR BODY, AND IS WORKING UP THE COURAGE TO FINALLY LEAVE IT BEHIND.

THEY'RE DEEPLY DYSPHORIC ABOUT THE APPEARANCE OF THEIR ROTTING VISAGE.

NO: 07: SWIMMING FISH



TYPE: BEAST

HABITAT: AQUATIC

ATTACK: SPIT



A FISH WHO EVOLVED LEGS AND ARMS.

THESE LIMBS AREN'T VERY EFFICIENT AT SWIMMING, SO IT'S ONLY ABLE TO PADDLE AROUND, BUT IF YOU'VE EVER WANTED TO HUG A FISH, THEN THIS IS YOUR CHANCE.

NO: 08: SKELETON



TYPE: UNDEAD

HABITAT: FOREST

ATTACK: BONE WALLOP



A PILE OF DUSTY OLD BONES THAT WANDERS THE EARTH WITH A NOSTALGIC SOMBER MOOD.

THEY GET OVERWHELMED BY MODERN LIFE, BUT THEY LOVE WATCHING THE SAME OLD TIMEY BLACK AND WHITE MOVIES OVER AND OVER.

NO: 09: WANDERING PINE



TYPE: NATURE

HABITAT: FOREST

ATTACK: PINE NEEDLE



A TREE THAT UPROOTED
ITSELF AND GAINED
CONCIOUSNESS, IT CREEPS
AROUND THE FOREST AND
EATS BIRDS.

DESPITE ITS LUMBERING
APPEARANCE, IT HAS A MAX
RUNNING SPEED OF 30 MPH.

NO: 10: NORMAL BIRD



TYPE: BEAST

HABITAT: MOUNTAIN

ATTACK: BEAK



EVER SINCE IT BECAME A BIRD, PEOPLE HAVE COMMENTED HOW MUCH MORE CONFIDENCE IT HAS.

IT ATE 400 BIRDS TO ACHIEVE THIS FORM.

NO: 11: LESSER IMP



TYPE: DEMON

HABITAT: GRASSLAND

ATTACK: POKE N' PROD



EVEN AMONGST IMPS, THIS DEMON IS TINY, BUT THAT JUST MEANS ITS EVIL IS MORE COMPACT.

ITS DEMONIC POWER CAUSES PEOPLE TO FORGET TO BRUSH THEIR TEETH AND PUT ON DEODORANT.

NO: 12: GHOUL



TYPE: UNDEAD

HABITAT: CAVE

ATTACK: EERIE HOWL



COMPLETELY DEAD, BUT
REMAINS ALIVE THROUGH
SHEER WILLPOWER.

BECAUSE OF THIS, IT'S
COMPLETELY IMPOSSIBLE TO
CHANGE A GHOUL'S MIND ON
ANYTHING.

NO: 13: FIREFLY



TYPE: ELEMENTAL
HABITAT: FOREST
ATTACK: ARSON



ONE DAY, THE EARTH SHALL
BE CLEANSSED WITH FLAMES,
AND ALL TRACES OF LIFE
WILL BE ANNIHILATED.

THIS IS THE AMBITIOUS
DREAM OF THIS PIXIE, WHO
STANDS AT A HEIGHT OF
2 INCHES.

NO: 14: PSYCHIC MUSHROOM



TYPE: NATURE

HABITAT: CAVE

ATTACK: BRAIN SPORE



STANDS COMPLETELY
MOTIONLESS, STARING
BLANKLY AT EVERYTHING.

THIS IS BECAUSE IT KNOWS
THE FUTURE, AND ALL THE
WAYS THAT IT COULD
POSSIBLY DIE.

NO: 15: GREEN LION



TYPE: BEAST

HABITAT: FOREST

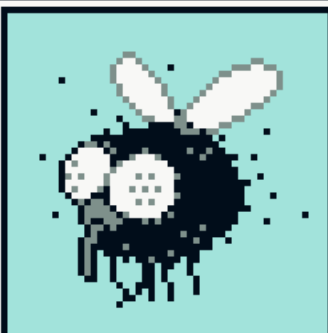
ATTACK: MAGIC ROAR



SAID TO BE A FOLIAGE
DEITY THAT TAKES THE
FORM OF A BEAST WITH A
BEAUTIFUL FACE, WHOSE
PRESENCE IS A SIGN OF A
PLENTIFUL HARVEST.

NONE OF THIS IS TRUE,
BUT IT LOVES TO HEAR THE
STORIES PEOPLE TELL.

NO: 16: SCUZZ-E-FLY



TYPE: NATURE

HABITAT: URBAN

ATTACK: ACID SLURP



THE TEXTURE OF ITS HAIRY
BODY... THE ONLY WORD TO
DESCRIBE IT IS "GREASY".

IT HARBOURS EVERY SINGLE
GERM IN THE WORLD, WHICH
ARE LOCKED IN ETERNAL
COMBAT.

NO: 17: KAPPA



TYPE: DEMON

HABITAT: AQUATIC

ATTACK: KIDNAP



IT HANGS OUT NEAR LAKES
AND STEALS AWAY ANYONE
WHO CAUSES POLLUTION.

IT FORCES ITS VICTIMS TO
SIT WITH ITS SICK MOTHER
FOR AN ENTIRE WEEK, SO
THAT THEY CAN SEE WHO
THEY ARE HURTING FACE TO
FACE.

NO: 18: MIMIC



TYPE: PUPPET

HABITAT: CAVE

ATTACK: TREASURE



BECAUSE ITS HEAD IS A
TREASURE CHEST, PEOPLE
WHO PASS BY THIS MONSTER
THINK IT'S OKAY TO TAKE
ITEMS FROM IT.

BECAUSE OF THIS,
EVERYTHING IT HAS EVER
OWNED HAS BEEN TAKEN.

NO: 19: GOBLIN LOU



TYPE: DEMON

HABITAT: URBAN

ATTACK: CHEW GUM



HE DID SO BADLY IN SCHOOL THAT HIS TEACHERS GAVE UP ON HIM, SO HE IS CONVINCED THAT HE DOESN'T MATTER.

HE HAS A SUPPORTIVE BOYFRIEND WHO IS HELPING HIM MAKE HIS LIFE BETTER THOUGH.

NO: 20: CHIMERA



BOSS

TYPE: BEAST

ATTACK:

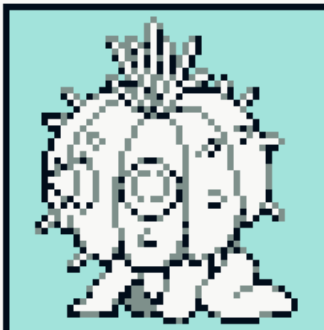
VICIOUS TUMBLE



IT ONLY BECAME A "BOSS"
BECAUSE OF ITS SIZE, BUT
IT DOESN'T FEEL VERY
CONFIDENT IN ITS
POSITION.

NEITHER FACE IS AWARE OF
EACH OTHERS PRESENCE.

NO: 21: CACTUS BOY



TYPE: NATURE

HABITAT: MOUNTAIN

ATTACK: PUNCTURE



A MONSTER WHO WAS BORN
IN A CACTUS PATCH, YEARS
OF BEING SCRATCHED BY
THORNS MADE IT TOUGH.

LIVING A PAINFUL LIFE
MEANS IT LONGS FOR LOVE,
BUT ITS PRICKLY HEAD
MEANS ANYONE WHO GETS
CLOSE WILL BE INJURED.

NO: 22: BUSY DRIVER



TYPE: PUPPET
HABITAT: URBAN
ATTACK: CRASH



"BRUMMM BRUMMM... WOW...
ISN'T MY NEW CAR SO
COOL? I CAN'T WAIT TO
DRIVE IT AROUND ALL OVER
TOWN AND MAKE LOADS OF
NOISE.

UGH. HEY, YOU IN FRONT,
SOME OF US HAVE PLACES
TO BE! GET A MOVE ON!"

NO: 23: TSUNAMI TSLUG



TYPE: ELEMENTAL
HABITAT: AQUATIC
ATTACK: TIDAL WAVE



A MOLLUSK WITH A BODY
MADE OUT OF SEAWATER, IT
CAME TO LIFE ONE NIGHT
AFTER A SPECIAL MOONBEAM
HIT THE OCEAN.

IT LURKS IN HARBOURS AND
EATS BOATS AND SEAGULLS
BECAUSE IT'S IMMORAL.

NO: 24: TENGU



TYPE: DEMON

HABITAT: FOREST

ATTACK: NOSE BONK



A CROW DEMON WHO TRIES TO FOOL TRESPASSERS OF THE FOREST WITH RIDDLES AND TRICKS.

AS IT IS EASILY CONFUSED AND OVERWHELMED, THIS USUALLY ENDS WITH THE TENGU ITSELF BEING TRICKED.

NO: 25: GRIEVER



TYPE: UNDEAD

HABITAT: MOUNTAIN

ATTACK: TOMB STONE



THERE WAS A FUNERAL THAT
WAS SO SAD THAT THE
GRAVESTONE CAME TO LIFE,
HAUNTING THE CEMETARY
AND CRYING EVER SINCE.

THE FAMILY OF THE
DECEASED ARE RATHER
DISTURBED BY THIS.

NO: 26: BOOGIE CHURCH



BOSS

TYPE: UNDEAD

ATTACK:

HYMN OF BLOOD



WHEN THIS ANCIENT GHOST
IMITATED A CHURCH, IT
WASN'T ENTIRELY SURE
WHAT A "PIPE ORGAN" WAS.

PROBABLY BEST NOT TO
LOOK INSIDE.

NO: 27: DEVIL DOLL



TYPE: PUPPET

HABITAT: FOREST

ATTACK: KNIFE



IT OUTLIVED THE LITTLE
BOY WHO CHERISHED IT.

AFTER A PERIOD OF GRIEF,
IT SOON REALIZED THAT IT
COULD FINALLY PARTAKE IN
ITS EVIL DESIRES, NO
LONGER BOUND TO ITS
OWNER.

NO: 28: RAT KING



TYPE: BEAST

HABITAT: URBAN

ATTACK: GARBAGE



GIANT RAT WHO LIVES IN
A RUBBISH BIN, IT HAS
LOFTY AMBITIONS BUT ITS
IDEAS NEVER SEEM TO GO
ANYWHERE.

IT LIVES THE LIFE OF A
HEDONIST BUT FEELS
CONFLICTED ABOUT IT.

NO: 29: VAMPIRE



TYPE: UNDEAD

HABITAT: URBAN

ATTACK: BLOOD FANGS



IT ATTACHES ITSELF TO THE BELLY OF LARGE ANIMALS SUCH AS HORSES, AND OFTEN FALLS ASLEEP WHILE FEEDING ON THEIR BLOOD.

DURING SUMMER, PEOPLE SLEEP UNDER VAMPIRE PROOF NETS.

NO: 30: VIRUS EGG



TYPE: ???

HABITAT: ???

ATTACK: DNA-DRILL



IT IS LOOKING FOR WHAT
IT THINKS IS THE COOLEST
MONSTER.

IF IT FINDS ONE IT LIKES,
IT STEALS A DNA SAMPLE
WITH ITS DRILL, AND THE
EGG WILL HATCH INTO
ITS NEW FORM.

NO: 31: POWER BEETLES



BOSS

TYPE: NATURE

ATTACK:

DOUBLE SUPLEX



A PAIR OF BEETLE WOMEN
WHO LOVE EACH OTHER VERY
MUCH AND CAN ACCOMPLISH
ANYTHING TOGETHER.

THEY ALWAYS COMPLIMENT
EACH OTHER TO BOOST
THEIR SELF ESTEEM.

NO: 32: TRIPLE DUCKS



TYPE: PUPPET

HABITAT: AQUATIC

ATTACK: AMBUSH



A GANG OF RUBBER DUCKS,
THEIR NAMES ARE JEREMIAH,
HORACE, AND LIL' PUDDLE.

ONE DAY, JEREMIAH
DISCOVERED THE "EVIL
HELMET OF HUMANITY", AND
LEAD THE GROUP DOWN A
ROTTEN PATH.

NO: 33: THREE MAN



TYPE: ELEMENTAL

HABITAT: ???

ATTACK: 3-BEAM



A NUMERICAL ENTITY, IT HAS A GREAT PASSION FOR MATHEMATICS.

IT HAS A MAGICAL BODY THAT WILL TAKE THE FORM OF THE HIGHEST NUMBER THAT IT CURRENTLY KNOWS.

NO: 34: SEA SHAMBLER



TYPE: NATURE

HABITAT: AQUATIC

ATTACK: SEAWEED



A SEA HAG WHOSE DESIRE
TO LEARN ABOUT
EVERYTHING CAUSES IT TO
PICK UP EVERYTHING IT
FINDS.

IF YOU REACH INTO ITS
SEAWEED COVERED BODY,
YOU'LL FIND AN ITEM YOU
LOST AS A CHILD.

NO: 35: FURIOUS STORM



TYPE: ELEMENTAL
HABITAT: MOUNTAIN
ATTACK: LIGHTNING



ONE DAY, A CHILD WHO
LET GO OF THEIR BALLOON
SUDDENLY GAINED THE
POWER TO FLOAT TO
RETRIEVE IT, BUT NEVER
CAME BACK DOWN.

THAT'S BECAUSE THEY WERE
EATEN BY FURIOUS STORM.

NO: 36: DOGU COMMANDER



BOSS

TYPE: PUPPET

ATTACK:

DOGU ONSLAUGHT



ANCIENT FIGURE WHO WAS
FOUND BROKEN INTO PIECES.

NOW THAT IT'S BACK
TOGETHER, IT WANTS TO
DESTROY EVERYTHING, TO
SHARE ITS PAIN.

NO: 37: POLTERGEIST



TYPE: UNDEAD

HABITAT: ???

ATTACK: TANTRUM



THE SPIRIT OF A BRATTY CHILD WHO MAKES ITS PRESENCE KNOWN BY THROWING FURNITURE AROUND.

FUN FACT: AROUND 25% OF ALL BIRDS ARE ACTUALLY DEAD, AND ARE JUST PUPPETEERED BY A POLTERGEIST.

NO: 38: RPG KNIGHT



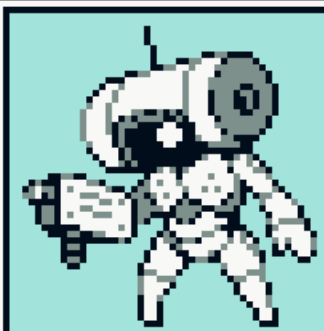
TYPE: ELEMENTAL
HABITAT: URBAN
ATTACK: SWORD



THE HEROINE OF THE HIT
RPG "CRYSTAL AXE IV:
BOOBY'S ATTACK", WHO
EMERGED FROM A MAGIC
VIDEO GAME CONSOLE.

FILLED WITH A SIMPLISTIC
DESIRE TO "GRIND", SHE
HAS FOUND WORK AT THE
LOCAL FLOUR MILL.

NO: 39: SCOUT ROBOT



TYPE: PUPPET

HABITAT: GRASSLAND

ATTACK: ASSAULT GUN



THE LAST UNIT FROM AN ARMY OF ROBOTS THAT WERE ALL DESTROYED LONG AGO, IT TREKS ACROSS FIELDS WITHOUT PURPOSE.

IT EATS PINECONES TO FUEL ITSELF AND LIKES TO OBSERVE NATURE.

NO: 40: CYCLOPS



TYPE: DEMON

HABITAT: MOUNTAIN

ATTACK: BOWLING EYE



BECAUSE IT HAS TROUBLE
RELATING TO ANYONE, IT
OBSESSES OVER ANYTHING
THAT HAS A ROUND SHAPE.

THE 8-BALL IT CARRIES IS
ITS MOST CHERISHED ITEM,
BUT IT ALSO HAS A
COLLECTION OF MARBLES
AND BOULDERS.

NO: ??: MR. ENIGMA



TYPE: ???

HABITAT: ???

ATTACK: ???



UGH. WHO IS THIS GUY?

SOMEONE GET HIM OUT OF
HERE PLEASE.

NO: 41: SHATTERED FACE



TYPE: ELEMENTAL

HABITAT: CAVE

ATTACK: HORROR FACE



FORMERLY HUMAN, IT STARED DEEP INTO A CRYSTAL WALL RIGHT AS IT WAS SHATTERED, RUINING ITS FACE FOREVER.

CAN BE HEARD STUTTERING THE PHRASE "IS THERE FOOD ON MY LIPS?" OVER AND OVER.

NO: 42: BAPHOMET



BOSS

TYPE: DEMON

ATTACK:

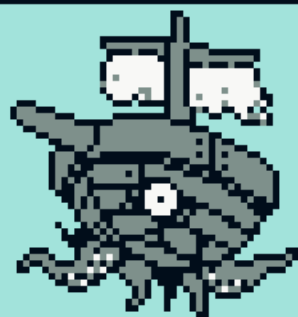
SUMMONING HELL



BECAUSE SHE HAS SUCH A FUN PERSONALITY, SHE IS WORSHIPPED BY HER FANS.

SHE IS TRANSGENDER, AND HAS INSPIRED MANY TO BE TRUE TO THEMSELVES.

NO: 43: SHIPWRECK



TYPE: UNDEAD

HABITAT: AQUATIC

ATTACK: ABYSS DRAG



IT DRIFTS ACROSS THE SEA
SEARCHING FOR TREASURE
BECAUSE THERE'S NOTHING
BETTER TO DO.

IT WISHES TO SEE MORE OF
WHAT LIFE ON LAND IS
LIKE, IT ONCE CRAWLED
ONTO SHORE AND ATE A
BEACH BALL.

NO: 44: GACHI-PILL



TYPE: PUPPET

HABITAT: ???

ATTACK: MEDICINE



REMEMBER TO TAKE YOUR
MEDICINE!

ITS BODY CONTAINS EVERY
KIND OF MEDICINE EVER
CREATED, BUT BECAUSE IT
DISPENSES THEM AT
RANDOM, IT'S NOT MUCH
USE.

NO: 45: DRAGON



TYPE: DEMON

HABITAT: CAVE

ATTACK: DRAGON FIRE



LIVES DEEP UNDERGROUND
WHERE IT GUARDS ITS
MOST PRECIOUS TREASURE,
A LAKE MADE OF SOUP.

IF EVERYONE KNEW ABOUT
SOUP LAKE, THE DRAGON'S
BABIES WOULD HAVE
NOTHING TO EAT, SO KEEP
THIS A SECRET, OKAY?

NO: 46: GOLEM



TYPE: PUPPET

HABITAT: MOUNTAIN

ATTACK: CLAY PUNCH



IT WAS CREATED OUT OF
CLAY BY A RABBI, AND
WILL OBEY ANY COMMAND
GIVEN TO IT.

IT LACKS INTUITION, AND
BECOMES ANXIOUS WHEN
NOT GIVEN CLEAR
INSTRUCTIONS, SO IT
OFTEN RETURNS TO ASK FOR
ADVICE.

NO: 47: SMOG MONSTER



TYPE: NATURE

HABITAT: ???

ATTACK: PLANTATION



AFTER YEARS OF TURNING RIVERS SOUR AND FORESTS ROTTEN, IT CHANGED ITS WAYS AND WORKS TO UNDO THE DAMAGE IT DID.

IT STILL GETS THE URGE TO POISON THE EARTH SOMETIMES, BUT IT HAS THIS UNDER CONTROL.

NO: 48: LAND STAR



TYPE: BEAST

HABITAT: ???

ATTACK: REGENERATE



IT HAS A HIGH STAR RATING NOT BECAUSE IT IS STRONG, BUT SIMPLY BECAUSE IT ITSELF IS A STAR.

IT SPREADS OUT ITS 5 LIMBS TO TAKE UP ALL OF THE SPACE AROUND IT, MAKING PUTTING IT ON A TEAM IMPOSSIBLE.

NO: 49: SUNRISE



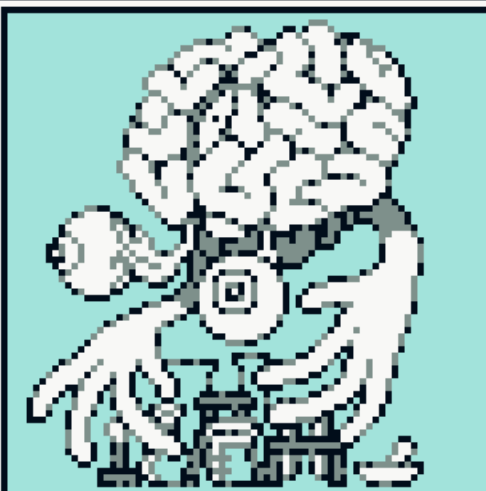
TYPE: ELEMENTAL
HABITAT: GRASSLAND
ATTACK: SOLAR RAY



UNDEAD MONSTERS ONLY
COME OUT AT NIGHT,
BECAUSE IF SPOTTED
DURING THE DAY, SUNRISE
WILL SWOOP DOWN AND
DEVOUR THEM.

IT HANGS IN THE SKY AND
SHOOTS LASER BEAMS THAT
CAN MELT ANYTHING.

NO: 50: HOMONCULUS



BOSS

TYPE: ELEMENTAL

ATTACK:

ALCHEMY POWER



WIZARD PLUM'S HUBRIS
LEAD TO THE CREATION OF
THIS MONSTER VIA ALCHEMY.

IT HARVESTS BIOMASS FROM
THE MICE IT EATS IN THE
HOPE OF GROWING A BODY.

NO: 51: ORCHARD GUARDIAN?



BOSS?

TYPE: DEAD

ATTACK:

....

OH DEAR...

THE ORCHARD GUARDIAN HAS
BEEN KILLED.

WHO COULD HAVE DONE
THIS?

NO: 52: ORCHARD SERVANT



TYPE: ???

HABITAT: ???

ATTACK: BODY THROW



THEY STUMBLE AROUND THE HOLY ORCHARD, MOVING AS IF BEING DRAGGED BY AN UNKNOWN FORCE.

THE EYES ARE JUST MARKS CARVED INTO THEIR SKIN, AND EACH SERVANT HAS A DIFFERENT ARRANGEMENT AND AMOUNT OF EYES.

NO: 53: POSSESSED CARROT



TYPE: PUPPET

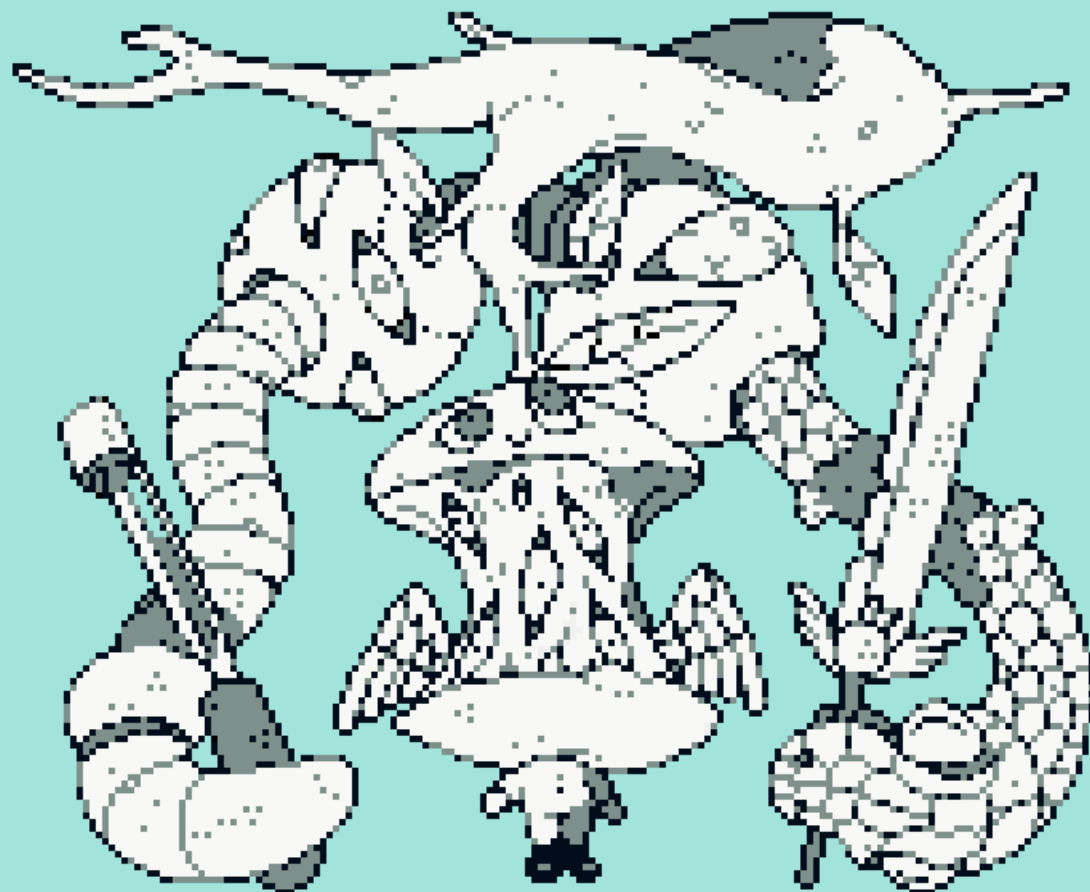
HABITAT: ???

ATTACK: LIFE SWING

HE TRIED TO STOP THE
ORCHARD GUARDIAN'S
MURDERER, AND NOW EXISTS
ONLY AS A SOULLESS
PUPPET.

THERE'S NOTHING WE CAN
DO FOR HIM NOW.

NO: 54: LORD OF EDEN



NO: 54: LORD OF EDEN

TYPE: FORBIDDEN

ATTACK: APPLE OF DEATH

ATTACK: END OF PARADISE



THE GROTESQUE FORM TAKEN
ON BY APPLE WARRIOR
AFTER HE ENTERED THE
HOLY ORCHARD, HE WAS
TIRED OF BEING WEAK, AND
EVERY DAY HE BECAME MORE
AND MORE DETERMINED TO
BECOME STRONG.

I'M SO SORRY IT HAD TO
END LIKE THIS.

NO: 55: DEPARTING SPIRITS



WITH LORD OF EDEN
DEFEATED, APPLE
WARRIOR TURNED
BACK TO HIS GOOD
OLD SELF.

"SOME TIME AGO I ATE A
STRANGE FRUIT, AND
AFTERWARDS ALL I COULD
THINK ABOUT WAS POWER."

CARROT WARRIOR FORGAVE
APPLE WARRIOR WITH HIS
FINAL BREATH, AND THEY
TRAVELLED TO HEAVEN
TOGETHER.



END